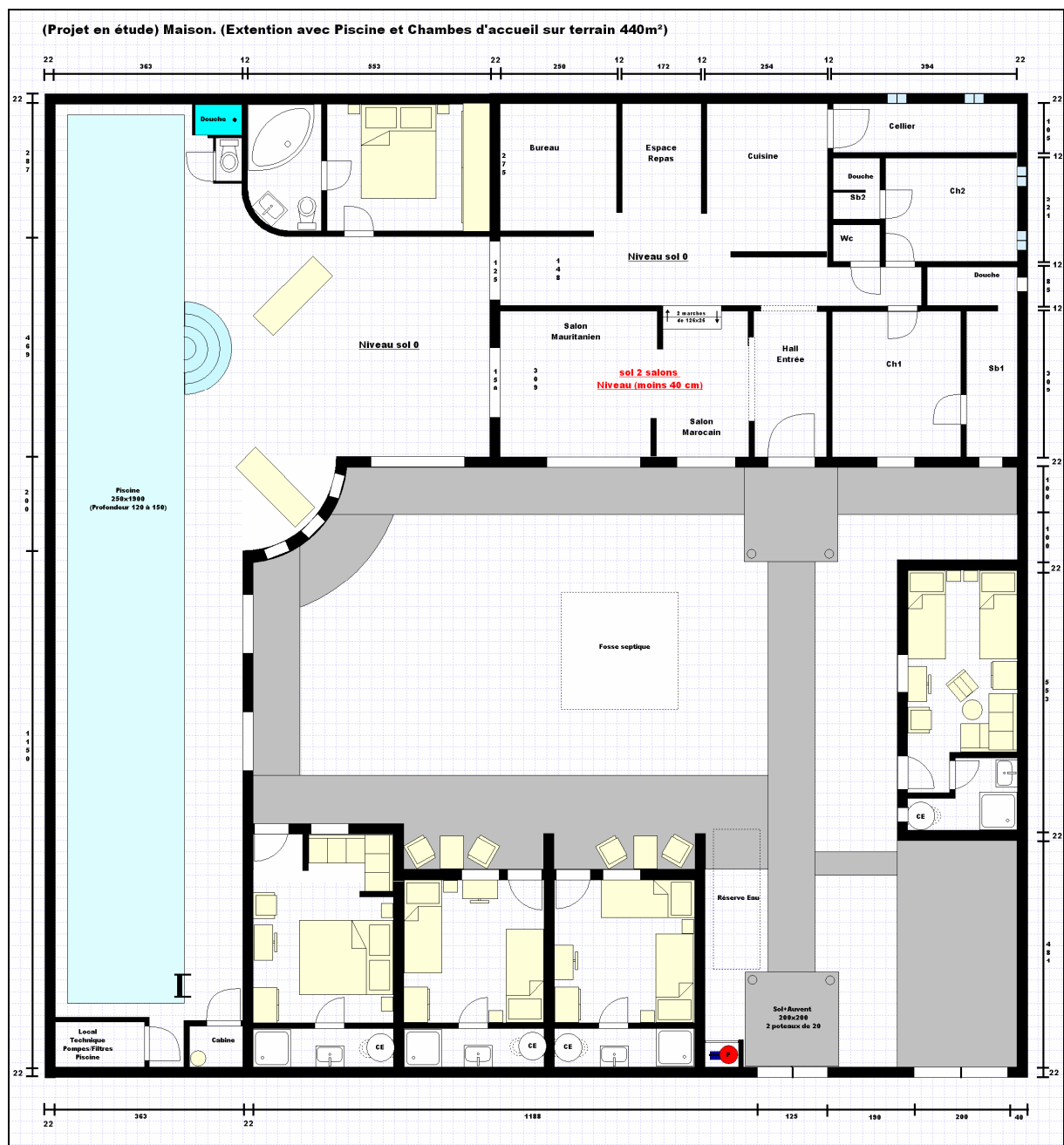


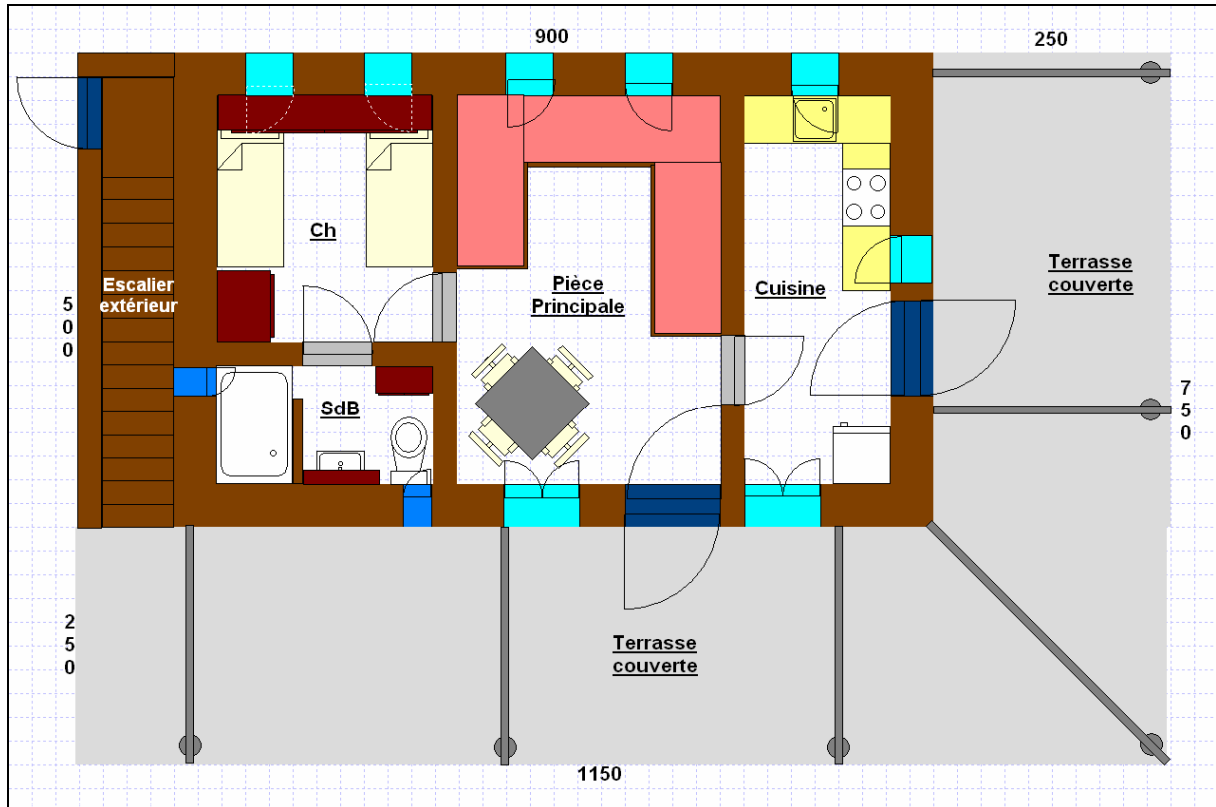
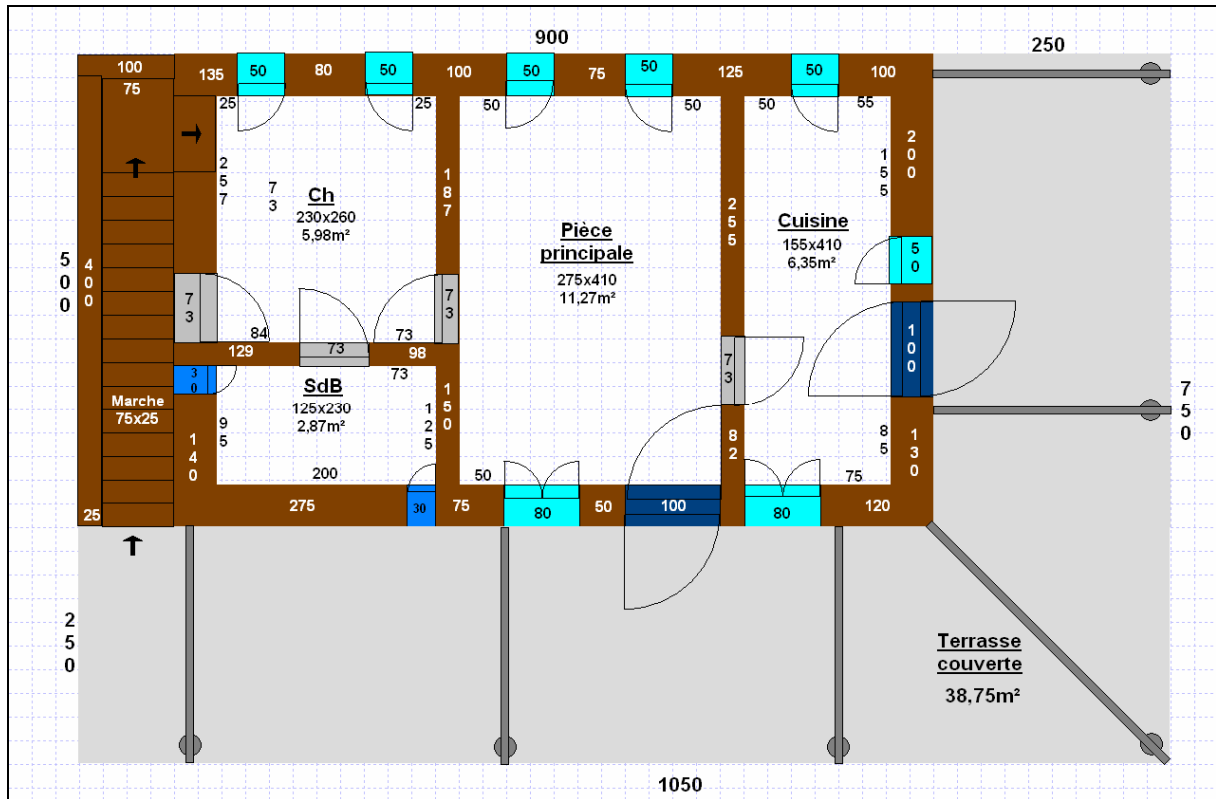
Etudes de projets touristiques

DELESALLE Philippe

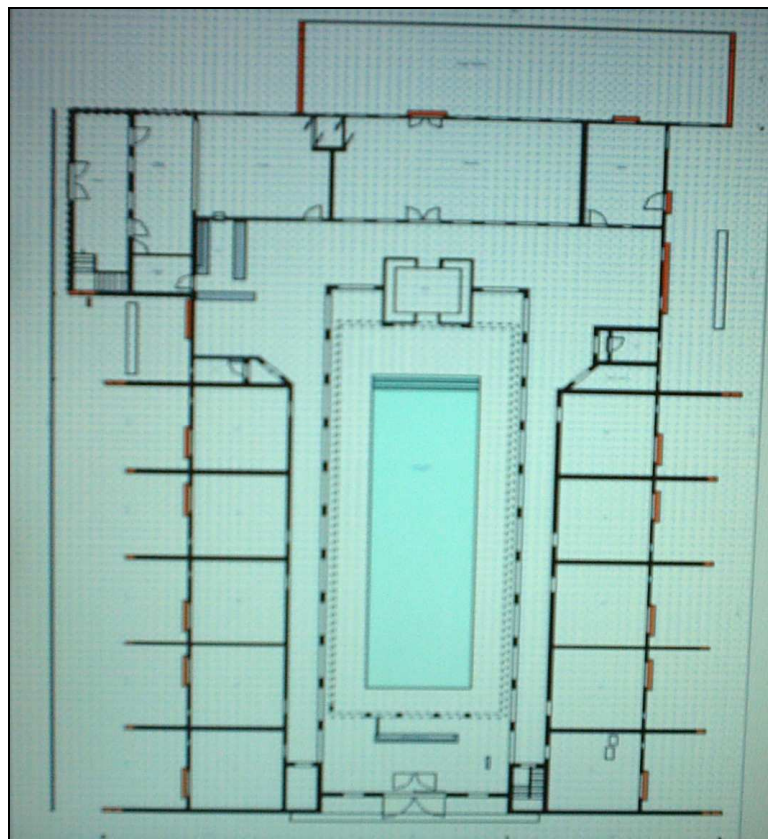
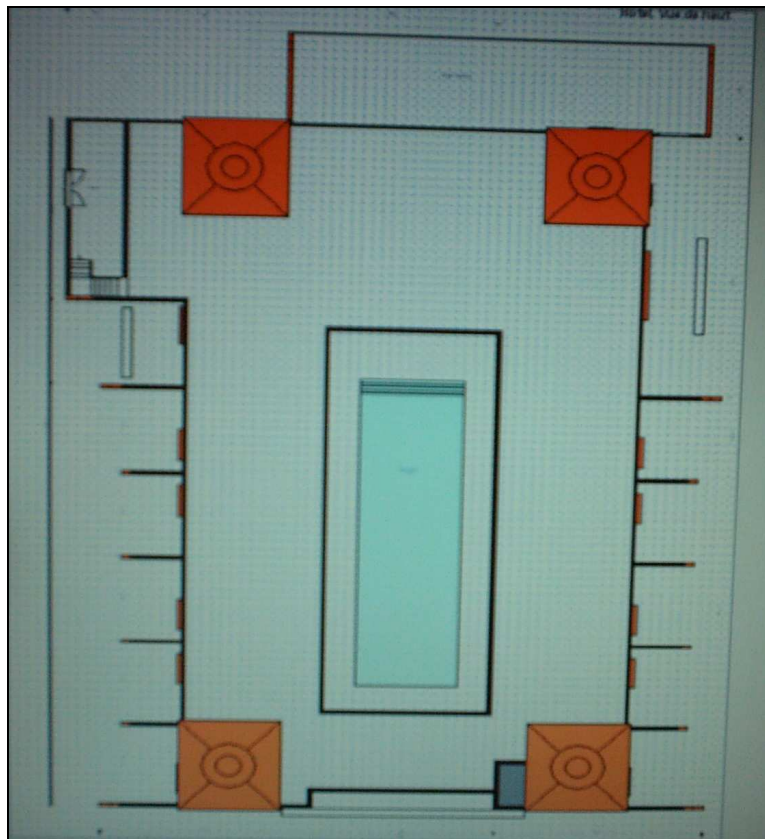
Projet maison d'hôtes 5 chambres 10 personnes.
+ Habitation. Piscine de 19 m couverte.

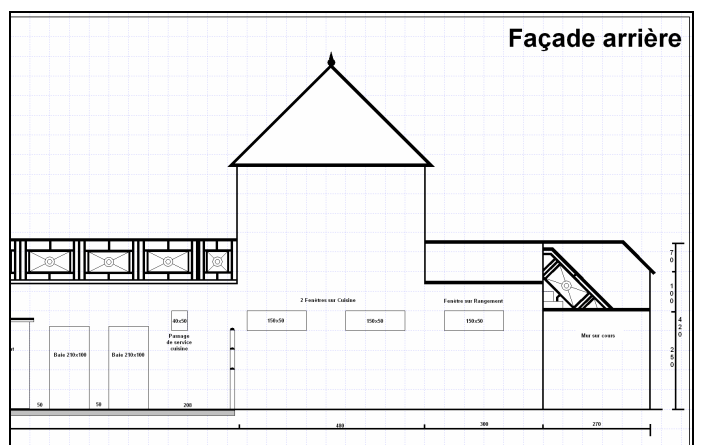
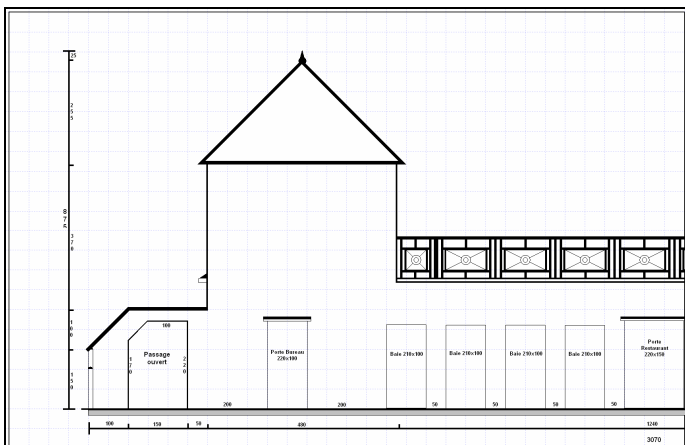
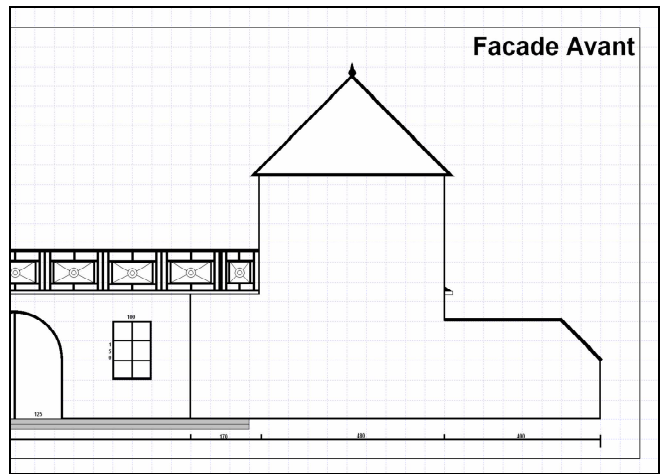
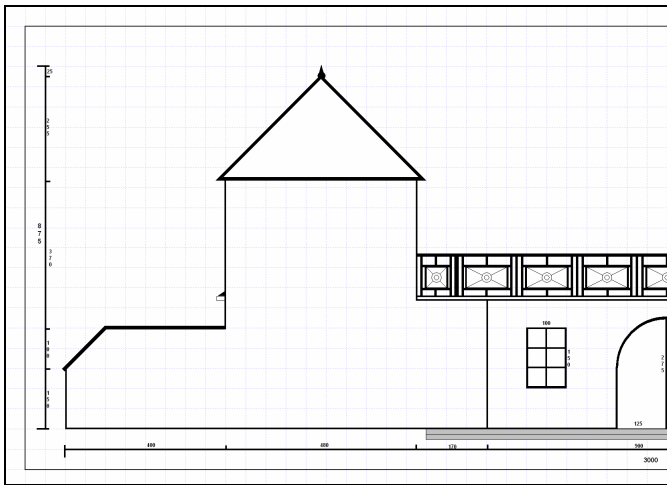
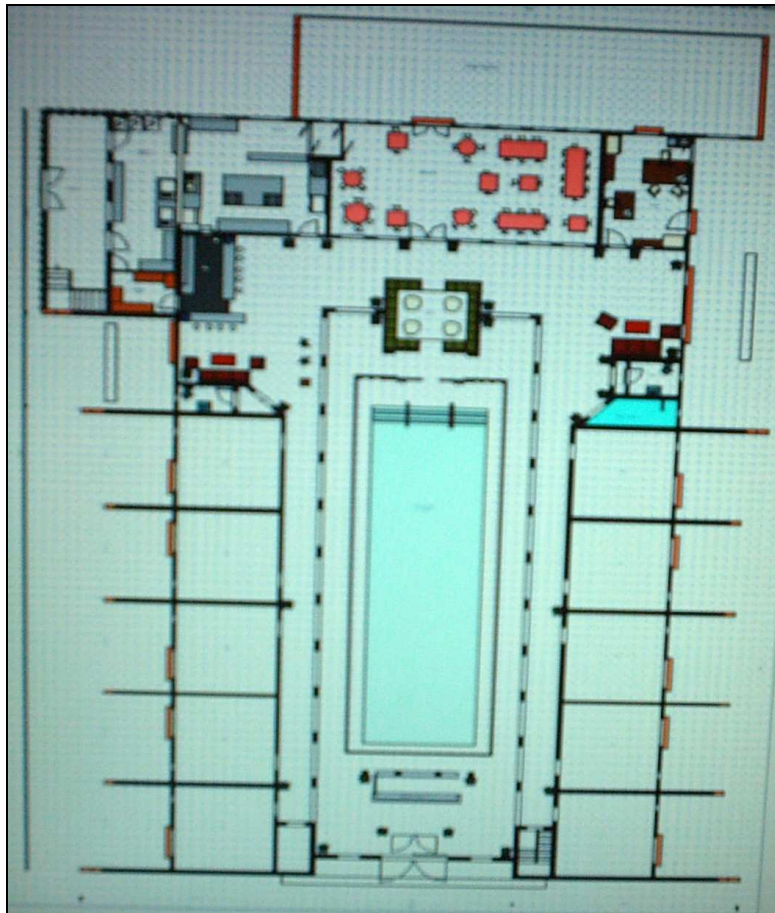


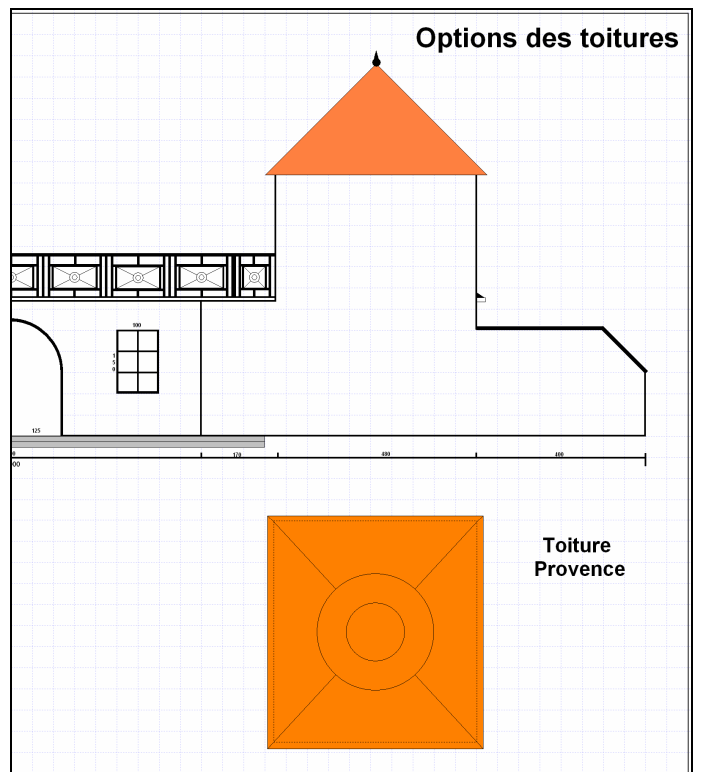
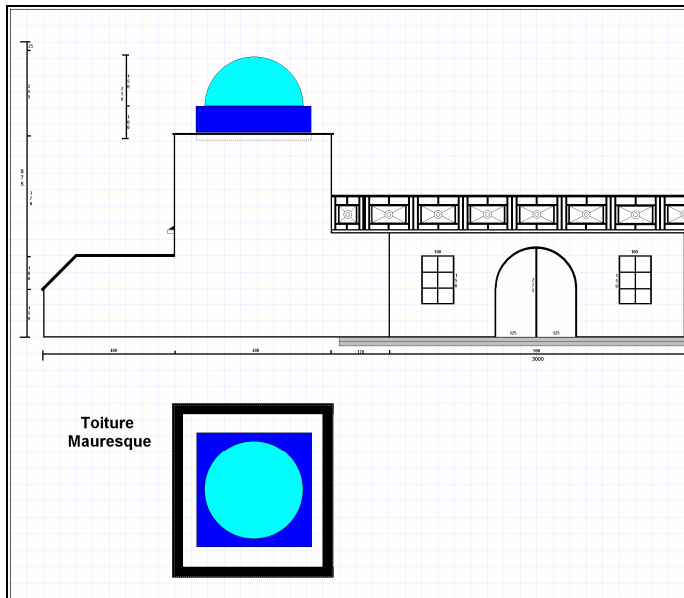
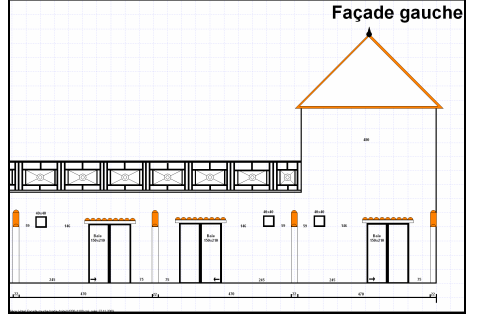
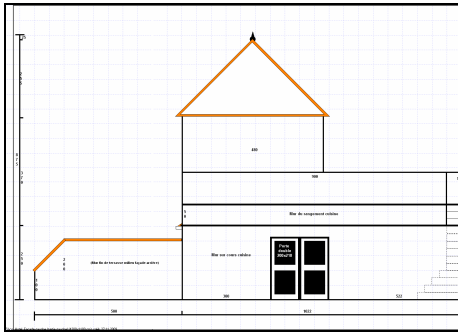
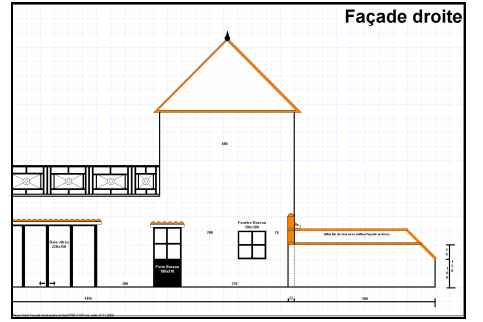
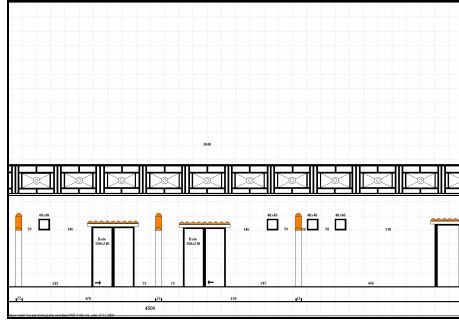
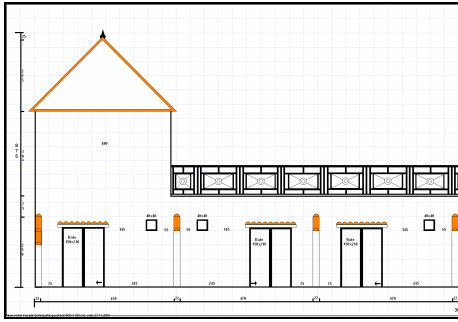
Projet de logement touristique.
 Construction sur 45 m² + auvent de 39 m²
 Accès terrasse haute avec local rangement sous escalier.



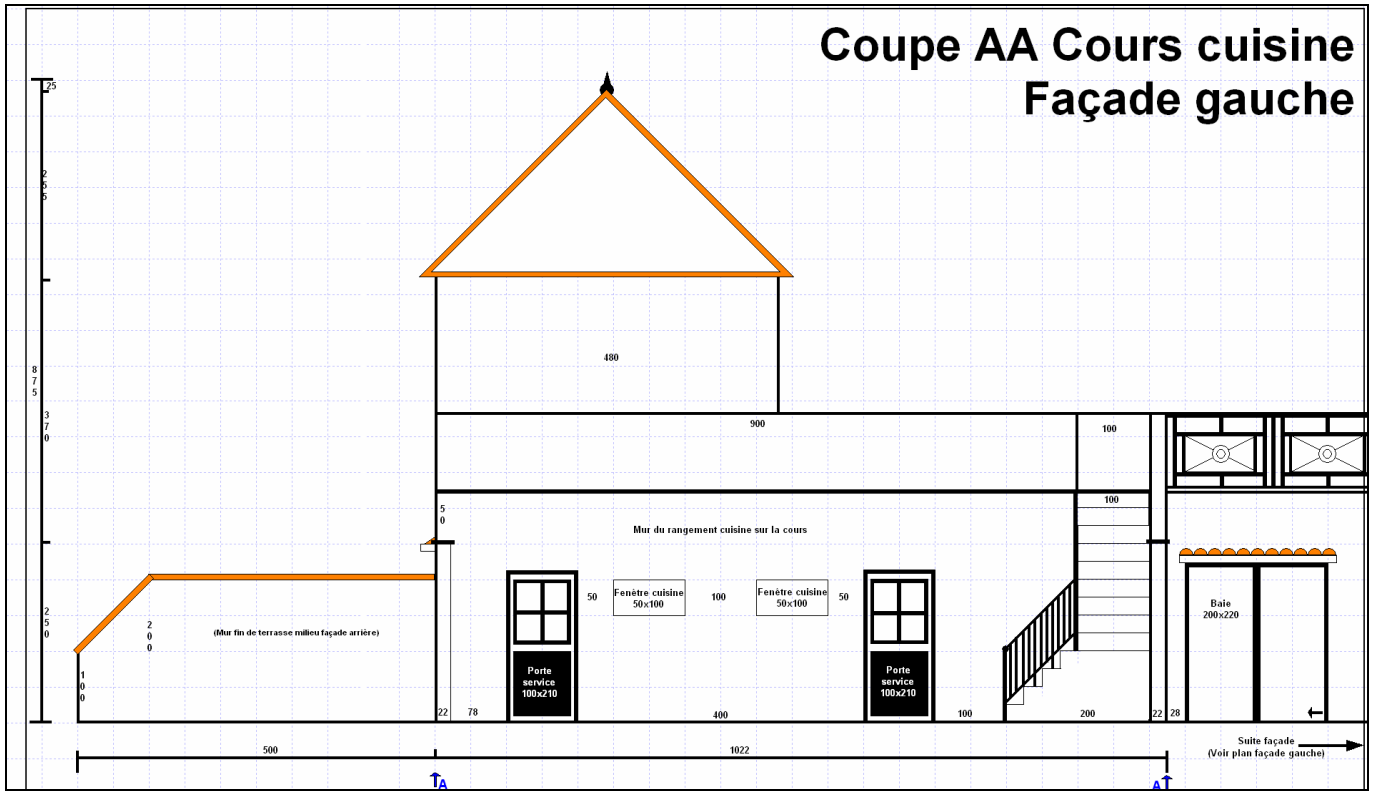
Projet hôtelier de 10 chambres avec terrasses privées.
Piscine avec ouverture de la toiture.
Restaurant. Cuisine. Bar. Salon. Accueil. Bureau.







Coupe AA Cours cuisine Façade gauche



Mesures murs Chambre type

